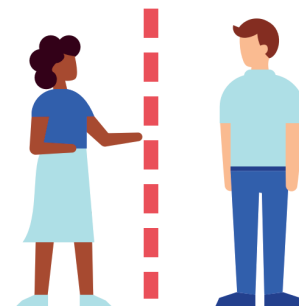
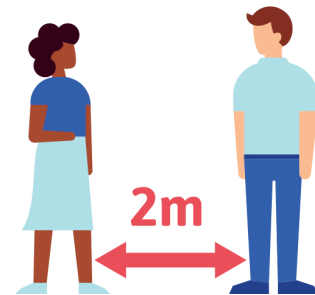


Safety concept of the iDSB under COVID-19:

Version: 27 January 2023

<h1>S</h1>	<p>S stands for substitution, which in the case of COVID-19 is only possible through sufficient distance (e.g. our virtual classroom).</p>
<h1>T</h1>	<p>T are technical measures (e.g. movement zones, accesses, separate school hours, break times).</p>
<h1>O</h1>	<p>O are organisational measures (e.g. class division).</p>
<h1>P</h1>	<p>P stands for personal protective measures (e.g. hand hygiene).</p>



The protection concept of the iDSB ensures that at least the requirements of the Flemish Ministry of Education for the resumption of face-to-face teaching in schools are respected and implemented. Within the framework of prevention, the aforementioned Ministry has introduced a traffic light system. With the help of this system, safety precautions are to be taken in time.

- CODE GREEN:** **No risk** - vaccine available. The restrictions listed in the protection concept no longer apply until further notice. It is nevertheless recommended nevertheless recommended that the distance and hygiene rules be observed.
- CODE YELLOW:** **Low risk** - Infections occur sporadically, regular school lessons take place. The safety and hygiene measures of the iDSB protection concept are applied. It is recommended to observe the safety and hygiene measures of the iDSB protection concept.
- CODE ORANGE:** **Increased risk** - There is an increase in infections, but they can still be assigned to individual clusters. The school is particularly attentive and takes appropriate measures. **From code Orange, the listed safety and hygiene measures are mandatory for all. are mandatory for all.**
- CODE RED:** **High risk** - Widespread infections and new outbreaks occur. The school closes.

1. Hygiene

Everyone in the school washes and disinfect their hands regularly.

Measures

On arrival in the morning, after returning from break, before and after eating in the square or in the canteen, after using the toilet and on entering the school, pupils and staff wash and disinfect their hands carefully.

Liquid soap dispensers are available in the KiBi group rooms as well as in the classrooms of the GS and all toilets. In the KiBi, the children are supervised by the teachers of the individual In the KiBi, the children are accompanied by the teachers of the individual groups during toilet use in order to ensure hand hygiene.

There are disinfectant dispensers at central points in the school building (e.g. main entrance to the primary and secondary school). disinfectant dispensers (children should always use soap). In the classrooms/group rooms, objects that are inviting to be touched but are not absolutely but are not absolutely necessary, are removed.

If possible, classrooms and offices are left open to avoid touching the door handles. avoid.

2. Keep distance

Adults and pupils keep 1.5 m distance from each other.

Measures

Movement and recreation zones

The school buildings of the secondary school and primary school open daily at 7.35 a.m., and KiBi welcomes the children according to the corresponding drop-off and pick-up times.

In the **Oberschule**, depending on the infection situation, the pupils are either collected from the courtyard of the main entrance to go to their classrooms together with their teacher, or they are sent directly to the classrooms. The minimum distance of 1.5 m must be observed both in front of the entrance and in the building and during breaks. After the end of lessons, pupils leave the school building via the main entrance, also observing the safety distance.

In the **primary school**, the children are received via the main entrance. The pupils go directly to their class, observing the distance. Parents can pick up their children at the gate to the main entrance after school.

At **KiBi**, parents may bring their children directly to the group rooms via the main entrance of the KiBi, parents must wear a nose and mouth protection when entering the school building. Pick-up takes place after a previously communicated time per group via the main entrance of the primary school as well as via the garden gate at the KiBi playground. The teachers will hand the children over to their parents at the appropriate pick-up points.

The one-way system applies in the secondary School and primary school.

Students will observe floor markings in the corridors, classrooms and schoolyard (indicating distance or directions of movement).

Teachers and pupils make sure that the distance rules are observed.

The following applies: classes will be held at 100% of the class size as well as 5 days per week. In the secondary school from grade 5 onwards, distance learning may also be provided if the infection figures increase. In the event of staff shortages, lessons can be taught by distance learning in all school branches.

Group / Class bubbles are observed for all children in KiBi, primary and secondary school. Care is taken to ensure that there is no mixing between groups or grades.

Breaks take place in the schoolyard adjacent to the classrooms. Here too, the social distance of 1.5 m must be maintained.

Rooms / number of persons

Adequate ventilation is provided throughout the classrooms. CO2 detectors are also installed in all rooms.

Parents and third parties are generally not allowed to enter the school; enquiries to the administration are made by telephone or e-mail. In exceptional cases/individual cases, the building may be entered. The wearing of a mouth-nose protection is obligatory. Teacher consultations only take place online.

The secretariats and all other offices may be entered by a maximum of one person; the distance in front of and in the secretariats and offices must be observed.

3. Compulsory masks

Masks are compulsory from grade 5.

Measures

To work directly with the pupils, the pedagogical staff is obliged to wear hygiene masks. If required, each member of staff receives a mask from the school.

It is up to the school management to decide whether to extend the obligation to wear masks.

4. Cleaning

Surfaces and objects are cleaned and disinfected regularly and as needed.

Measures

The school's cleaning company cleans classrooms and corridors daily, disinfects door handles, stair railings, switches and washbasins, and disposes of waste regularly and properly.

Teachers air the classrooms regularly.

Cups, glasses, dishes, food or drinks are not to be shared with others. Dishes are to be put in the dishwasher immediately after use. No dishes may be left in the rooms!

5. COVID-19 infected persons in the iDSB

Measures

Behaviour in case of symptoms of suspicion

Not every cold or flu is a direct suspicion of COVID 19. Students should stay home if they show clear signs of a cold or flu-like symptoms and should be monitored by parents.

Behaviour in the event of symptoms at school

Parents or guardians of children with symptoms of illness must be contacted immediately, to pick up their children directly. Parents must ensure that they can be reached by telephone. Sick children will be kept in a well-ventilated separate room until they are collected by the parents, separate room until they are picked up by the parents.

Testing and quarantine

- **Symptoms of COVID-19**, see *Annex 1 Suspicion of COVID-19*
- **High risk contact:** Children/staff who have a positive COVID-19 case within the residential community may come to school. However, mouth/nose protection (FFP2 mask) must be worn for 7 days.

Contact minimisation of grades and quarantine

- If there is a positive case in the class, contact with other grades is minimised.
- If the children of the affected grade remain symptom-free during the contact minimisation phase, isolated schooling can continue even after positive test results become known.
- If several positive cases (clusters) arise in the class after the test result has become known in the class, then it is up to the school management to send the class home and to order order online lessons.

6. Information for the school community

Measures

Staff, pupils and their guardians will be informed of any change in the code.

All iDSB events such as musicals, theatre, class parties, etc. are always implemented in compliance with our protection concept. There is no mask requirement for **code yellow** but mask requirement for **code orange** and 3G rule (vaccinated, recovered or tested) as well as suspension of third-party leasing.

The pupils are also informed about the protective measures in the classes and trained in their application in order to establish and consolidate a ritualised behaviour.

The protective measures are posted at the entrances, in the classrooms and toilets and are updated when necessary. The protection concept can also be downloaded from the school website.

7. Management

Measures

The employees are informed and trained about hygiene measures, the proper use of mouth-nose protection and the observance of protective measures.

School and administrative management monitor compliance with all protective measures and ensure the availability of products and materials.

Other protective measures

Measures

CODE ORANGE: In addition, the following applies to the canteen's food service:

- No self-service at meals, no own cutlery service
- Staggered number of people

Links

General information:

Recent decisions of the Flemish Ministry of Education (last version, November 2022)

Promotional health service <https://www.info-coronavirus.be/de/>

More information on testing and quarantine can be found on the websites of the competent authorities:

Wallonie <https://covid.aviq.be/fr/testing-particuliers>

Brussels <https://coronavirus.brussels/index.php/en/> oder <https://brussels.testcovid.be/fr/>

German speaking community <https://www.ostbelgienlive.be/desktopdefault.aspx/tabid-6713/>

Tervuren <https://www.tervuren.be/coronavirus/drive-testcentrum-tervuren>

Flanders <https://www.vlaanderen.be/gezondheid-en-welzijn/coronatesten-en-quarantaine#ikheb-een-hoogrisicocontact-gehad>

All-round vaccination:

<https://bruvax.brussels.doctena.be/>

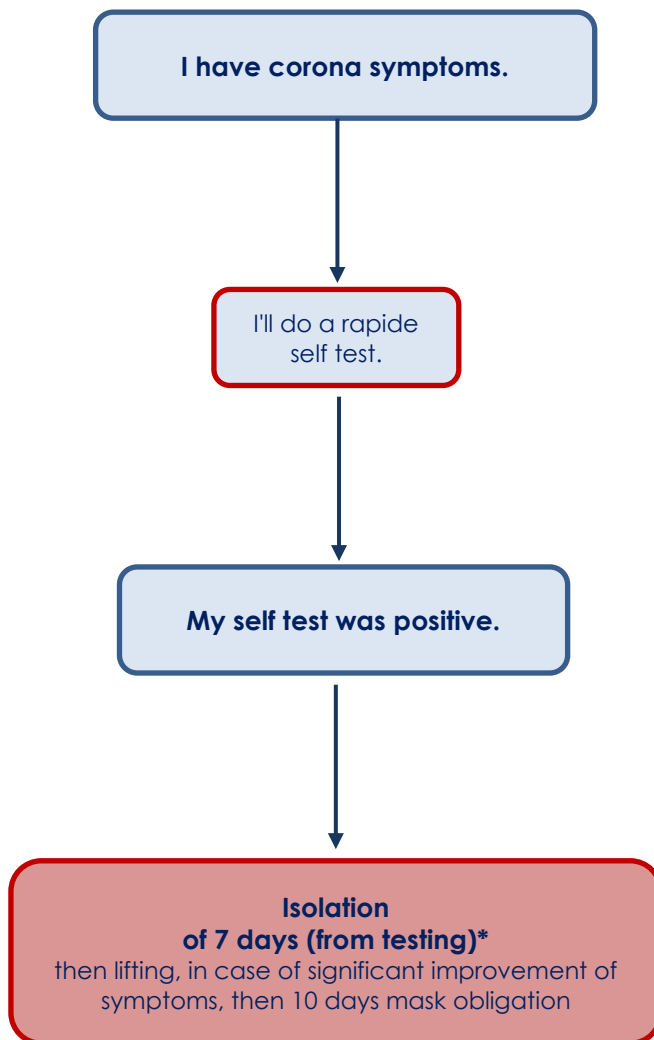
Travel abroad:

<https://diplomatie.belgium.be/de>

Signed
Jochen Flohn
Principal

Signed
Petra van den Beukel
Head of Administration

Appendix 1, Symptoms on COVID-19 for guardians and pupils, employees



*The isolation of 7 days refers to the day of testing, i.e. if, for example, the test was carried out on a Thursday, the quarantine is lifted on the Thursday of the following week.